

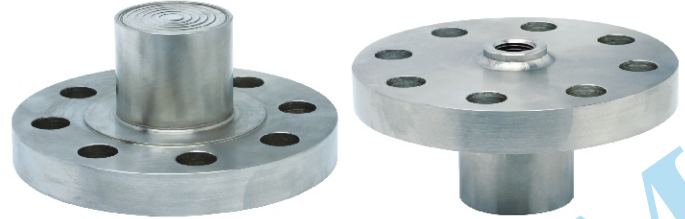
FEATURES

- Extended neck design
- Laser welded diaphragm
- Optional exotic materials

APPLICATION

- Separation systems
- Isolation applications
- Viscous & corrosive media
- High-pressure applications
- High vibration application
- Slurry applications

Extended Neck

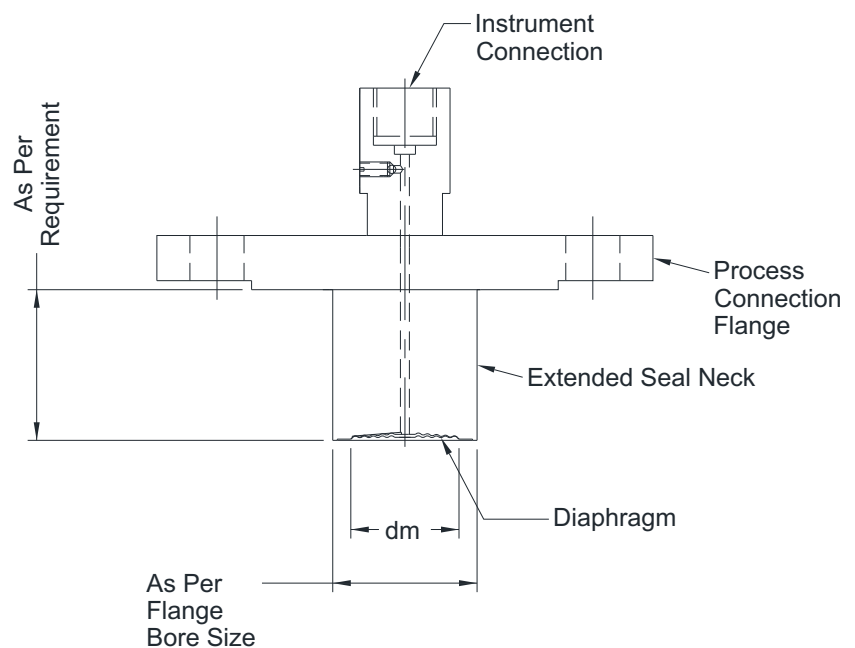


STANDARD SPECIFICATIONS

Range type	: -1...0 bar to 0...250 bar
Chamber / Flange material	: AISI 316 SS
Diaphragm	: AISI 316L SS
Instrument connection	: 1/2" NPT (F) / 1/2" BSP (F)
Sealing fluid	: Silicon DC 200 (-40...205°C)
Process connection	: Flange as per ANSI B16.5 / EN1092-1 / JIS B 2210
Flange facing type	: Raised face
Neck extension	: 50...300 mm
Assembly	: Direct

DIMENSIONAL DRAWING

Type S47



All dimensions are in mm.

ORDERING CODES

1. RANGE TYPE		S47	8. PROTECTION ON WETTED PARTS		XX	
S47	-1...250 bar		PA	PTFE coating on flange		
2. CHAMBER / FLANGE MATERIAL		LF	PC	PTFE coating on diaphragm		
3. DIAPHRAGM MATERIAL			DG	9. NECK EXTENSION		100
LF	AISI 316 SS			XXX	50mm up to 200 mm	
LG	AISI 316L SS			10. ASSEMBLY		B8
LM	Monel 400			B8	Direct	
LO	Hastelloy C-276			B9	Remote (capillary)	
LU	AISI 316L SS, UREA GRADE	11. CAPILLARY		XX		
4. INSTRUMENT CONNECTION		04N	OU		AISI 304 SS	
DG	AISI 316L SS		12. ARMOUR		XX	
DM	Monel 400		OX	AISI 304 SS		
DO	Hastelloy C-276		OY	AISI 316 SS		
DU	AISI 316L SS, UREA GRADE		OZ	PVC (Ambient max. 60°C)		
5. SEALING FLUID			0A	13. REMOTE MOUNTING LENGTH		XXXX
03B	3/8" BSP (F)	XXXX		1000 mm up to 4000 mm		
04N	1/2" NPT (F)	14. OTHER OPTIONS		XX		
02B	1/4" BSP (F)	XZ			Dry seal	
04B	1/2" BSP (F)	HL			Helium leak test	
02N	1/4" NPT (F)	TM	Material test certificate 2.2			
6. PROCESS CONNECTION		A25	TC	Material test certificate 3.1		
XXX	Refer Flange Table for the codes		7. FLANGE FACING			
7. FLANGE FACING		R	F	Flat Face		
F	Flat Face		J	Ring-Type Joint		
J	Ring-Type Joint		R	Raised Face		
R	Raised Face		T	Tongue and Groove (T&G)		
T	Tongue and Groove (T&G)					

Ordering Example : D204-S47-LF-DG-04N-OA-A25-R-XX-100-B8

NOTES:

- Other sealing liquids are available, contact factory for further details.
- All metal diaphragms are laser welded to the Top Chamber.